

Rotherham Children and Young People's Services

Assessment of Performance by Every Child Matters Outcome

2009/10 Outturn Report

This report outlines performance at the end of 2009/10 against targets, with comparisons against previous performance and where possible statistical neighbour and national data.

It should be read in conjunction with the 'CYPS Performance Monitoring Table – Outturn 2009/10' (Appendix B) as it includes references throughout the text to the numbering structure within the table.

Please note the following data health warnings;

- Comparative data relates to the latest available data and therefore date periods for some indicators may vary. It has been sourced via the DCSF Local Area Interactive Tool (downloaded 27th May 2010)

Performance Summary – All themes

Number of Indicators: 58

Number of Components: 69

The tables below give data analysis of performance by Every Child Matters outcomes. These are abbreviated as follows;

BH = Being Healthy
MPC = Making a Positive Contribution

SS = Staying Safe
SS = Enjoying & Achieving
AEW = Achieving Economic Wellbeing

Performance against Targets (Comparing this quarter's performance against set targets)

On Target	Interpretation	BH		SS		EA		MPC		AEW		All	
		No	%	No	%	No	%	No	%	No	%	No	%
✓	Has met target	8	73%	4	36%	13	46%	8	67%	3	43%	36	52%
✗	Has not met target	1	9%	6	55%	12	43%	2	17%	1	14%	22	32%
- / n/a	No targets set (ie new and/or baseline yr)	2	18%	1	9%	3	11%	3	17%	3	43%	11	16%
Total Number of Indicators		7		11		23		10		7		58	
Total Number of Components		11		11		28		12		7		69	

Direction of Travel "DOT" (Comparing 09/10 outturn to 08/09 outturn)

DOT	Interpretation	BH		SS		EA		MPC		AEW		All	
		No	%	No	%	No	%	No	%	No	%	No	%
↑	Top performance or improvement	9	82%	6	55%	18	64%	8	67%	6	86%	47	68%
→	Performance has maintained	0	0%	0	0%	2	7%	0	0%	0	0%	2	3%
↓	Performance has declined	1	9%	5	45%	7	25%	3	25%	1	14%	17	25%
- / n/a	No comparison can be made	1	9%	0	0%	1	4%	1	8%	0	0%	3	4%
Total Number of Indicators		7		11		23		10		7		58	
Total Number of Components		11		11		28		12		7		69	

Year to Date Performance “YTD”

Outturn Perf.	Interpretation	BH		SS		EA		MPC		AEW		All	
		No	%	No	%	No	%	No	%	No	%	No	%
★	2% above target or Top Performance	5	45%	3	27%	8	29%	3	25%	1	14%	20	29%
●	On Target	3	27%	1	9%	5	18%	5	42%	2	29%	16	23%
▲	Below Target	1	9%	6	55%	12	43%	2	17%	1	14%	22	32%
- / n/a	No targets set (<i>ie new and/or baseline year</i>)	2	18%	1	9%	3	11%	2	17%	3	43%	11	16%
Total Number of Indicators		7		11		23		10		7		58	
Total Number of Components		11		11		28		12		7		69	

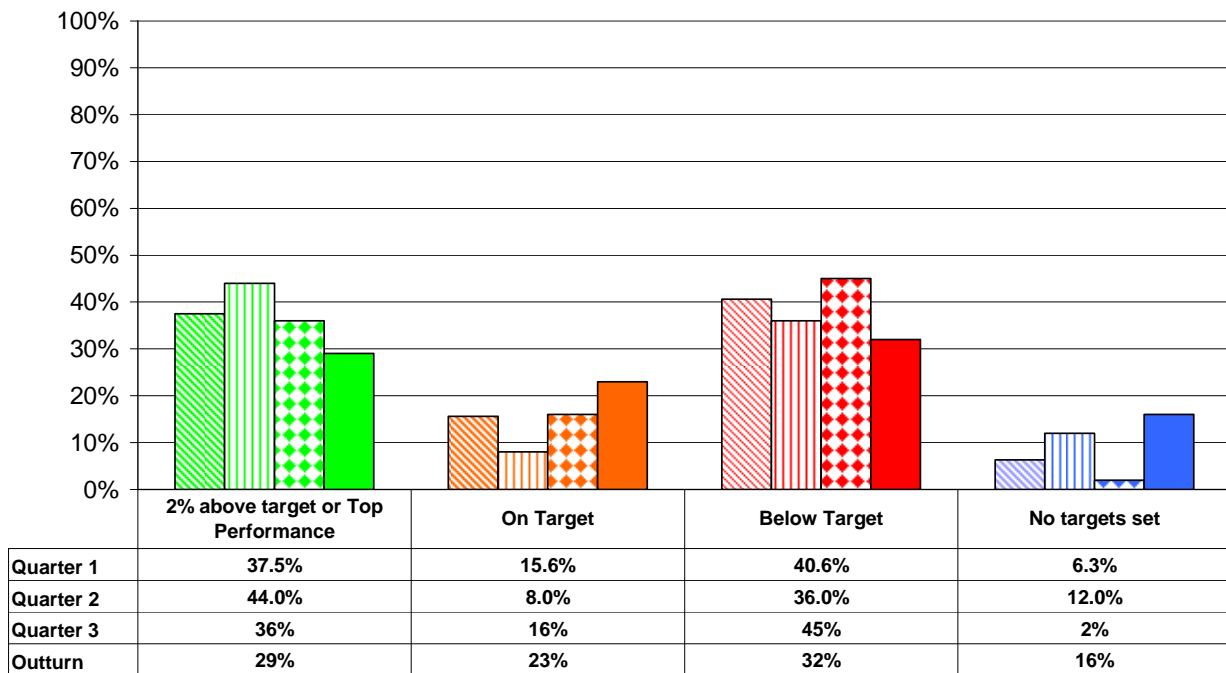
Performance against Statistical Neighbours

Outturn Perf.	Interpretation	BH		SS		EA		MPC		AEW		All	
		No	%	No	%	No	%	No	%	No	%	No	%
★	2% above Statistical Neighbour or Top Performance	1	9%	3	27%	6	21%	1	8%	4	57%	15	22%
●	Same as Statistical Neighbour or above by less than 2%	4	36%	4	36%	3	11%	2	17%	1	14%	14	20%
▲	Below Statistical Neighbour	4	36%	4	36%	14	50%	4	33%	2	29%	28	41%
- / n/a	No Statistical Neighbour Data to compare	2	18%	0	0%	5	18%	5	42%	0	0%	12	17%
Total Number of Indicators		7		11		23		10		7		58	
Total Number of Components		11		11		28		12		7		69	

Performance against National

Outturn Perf.	Interpretation	BH		SS		EA		MPC		AEW		All	
		No	%	No	%	No	%	No	%	No	%	No	%
★	2% above National or Top Performance	1	9%	3	27%	2	7%	0	0%	2	29%	8	12%
●	Same as National or above by less than 2%	1	9%	4	36%	0	0%	2	17%	2	29%	9	13%
▲	Below National	5	45%	4	36%	16	57%	4	33%	3	43%	32	46%
- / n/a	No National Data to compare	4	36%	0	0%	10	36%	6	50%	0	0%	20	29%
Total Number of Indicators		7		11		23		10		7		58	
Total Number of Components		11		11		28		12		7		69	

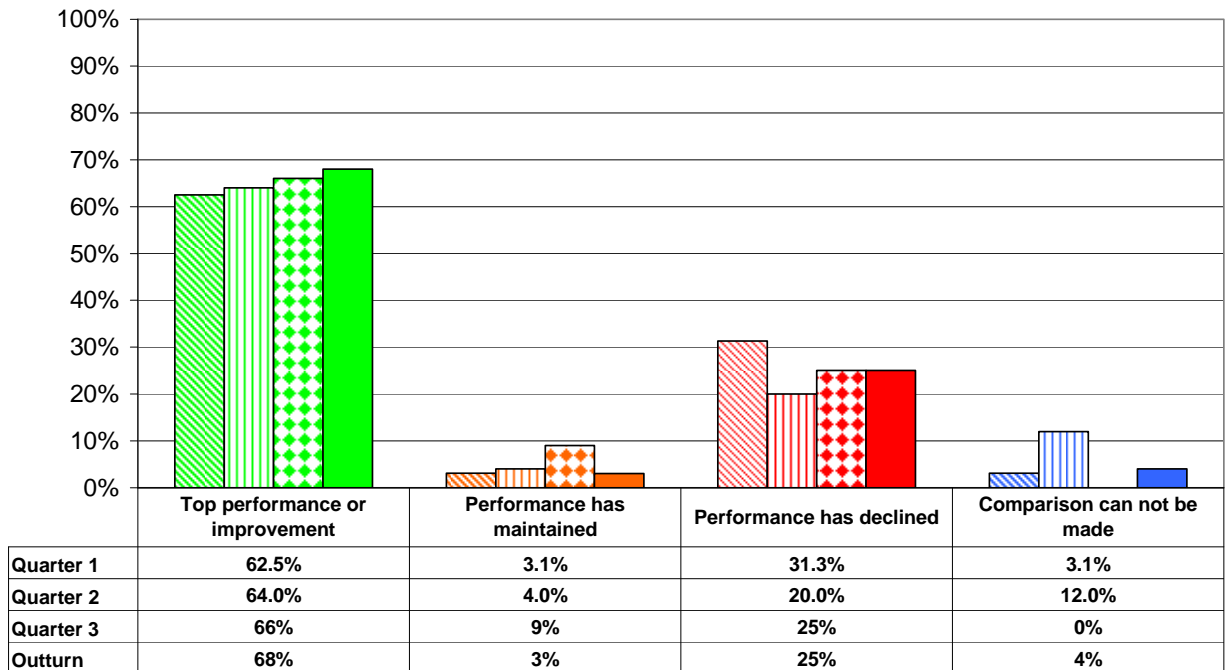
**Progress Over Quarters 2009-10
Performance Year to Date - All Themes**



Please note that there are significantly more indicators reported for the outturn than are reported quarterly. This is why there are large variations in the outturn figures against the quarterly figures.

Due to rounding some percentage totals may not equate to 100%.

**Progress Over Quarters 2009-10
Direction of Travel - All Themes**



Please note that Direction of travel (DOT) for Outturn compares year on year ie. 2009/10 performance against 2008/09 performance. Where as the Quarterly DOT compares performance against the previous Quarter.

Due to rounding some percentage totals may not equate to 100%.

Notes on overall performance

- Across all themes, 52% of the National Indicator components have met their targets. This shows a 17% increase from 35% in the 2008/09 outturn report. This increase is particularly evident in the Being Healthy and Making a Positive Contribution themes which have 73% and 67% of indicators on target respectively. Being Healthy shows particularly strong performance with 45% of indicators achieving top performance or are 2% above target.
- There are, however still 32% of all indicators which are not meeting targets. The Staying Safe and Enjoying and Achieving themes are underperforming with 55% and 43% of indicators not meeting targets respectively. Future targets are to be reviewed with managers to ensure that they are appropriate and realistic whilst still driving improvement.
- Across all themes 68% of the National Indicator components in 2009/10 have shown improvement on the previous year. This increase is particularly evident in the Being Healthy and Achieving Economic Wellbeing themes which show 82% and 86% of components improving respectively. Performance has declined in 25% of components in comparison to 2008/09 outturn performance, this can be seen predominantly within the Staying Safe theme which shows 45% of components having a downwards direction of travel.
- This year the benchmarking data downloaded from the Local Area Interactive Tool shows that 46% of indicator components are below the national average with only 25% being inline or above. Comparison against statistical neighbours show that 42% of components are inline or above and 41% are below the statistical neighbour average.

In addition to the 58 indicators above, there are seven that fall outside of the Every Child Matters framework.

- NI 13 - Migrants' English language skills and knowledge. This has a 2009/10 outturn of 13% which is a 5% decrease in performance from 2008/09. It should be noted that this indicator has now been deleted from the National Indicator set so this will be the last period of reporting.
- NI 22 - Perceptions of parents taking responsibility for the behaviour of their children in the area. This indicator is only reported biennially so the next figures are 2010/11.
- NI 161 - Number of Level 1 qualification in literacy (including ESOL) achieved. Performance for 2009/10 showed a positive direction of travel with an outturn figure of 1400 up from 1100 in 2008/09 although it remains below the target of 1581.
- NI 162 - Number of Entry Level 3 qualifications in numeracy achieved. Performance for 2009/10 showed a positive direction of travel with an outturn figure of 500 up from 400 in 2008/09 although it remains significantly below the target of 2950.
- NI 163 - Proportion of population aged 19-64 for males and 19-59 for females qualified to at least Level 2 or higher. These figures are delivered through the annual Labour Force Survey which is not available until August 2010.

- NI 164 - Proportion of population aged 19-64 for males and 19-59 for females qualified to at least Level 3 or higher. These figures are delivered through the annual Labour Force Survey which is not available until August 2010.
- NI 165 - Proportion of population aged 19-64 for males and 19-59 for females qualified to at least Level 4 or higher. These figures are delivered through the annual Labour Force Survey which is not available until August 2010.

Please note that the following Every Child Matters indicators are not included within this report;

Being Healthy

- NI 58 - Emotional and behavioural health of looked after children (not released until 903 Statutory return has been validated in July 2010).

Staying safe

- NI 63 - Stability of placements of looked after children: length of placement (not released until 903 Statutory return has been validated in July 2010).
- NI 70 - Reduce emergency hospital admissions caused by unintentional and deliberate injuries to children and young people (No outturn figure available from Health service).

Enjoying and Achieving

- NI 107 - Key Stage 2 attainment for Black and minority ethnic groups (Awaiting clarification from Audit Commission regarding ethnicity groupings).
- NI 108 - Key Stage 4 attainment for Black and minority ethnic groups (Awaiting clarification from Audit Commission regarding ethnicity groupings).

Making a Positive Contribution

- NI 44 - Ethnic composition of offenders on Youth Justice System disposals (this indicator is only available one quarter in arrears, therefore it will not be released until July 2010).

Achieving Economic Wellbeing

- NI 91 - Participation of 17 year-olds in education or training (This can not be calculated locally and no data has been published nationally for over 12 months the next update is due June 2010).
- NI 106 - Young people from low income backgrounds progressing to higher education This can not be calculated locally and no data has been published nationally for over 12 months. We are still waiting confirmation of next update by the Department for Education).
- NI118 - Take up of formal childcare by low-income working families (Outturn data will not be available until June 2010).

Areas of Success

Being Healthy

- Take up of primary school lunches (No 3a / NI52a) continues to improve with a net increase of 565 meals per day from last year. An outturn figure of 43.9% has been achieved against a target of 40.5%. This is an increase on the 2008/09 outturn (also 40.5%) and is above the national average of 39.3%.
- Effectiveness of child and adolescent mental health (CAMHs) services (No 2 / NI51) is measured via a self assessment against four set questions with points awarded one to four for each answer. We have achieved 14 out of a possible 16 point and are above our target of 12. This puts us inline with the statistical neighbour average of 14 although slightly below the national average of 14.7.

Staying Safe

Three indicators are performing 2% or better above target these are;

- Stability of placements of looked after children: number of placements (No 11 / NI62) has reduced from a 2008/09 outturn figure of 13.3% to a provisional figure of 9.1% this year. This is above the target of 11%, above the statistical neighbour average of 10.8% and above the national average of 10.7%.
- Looked after children cases which were reviewed within required timescales (No 14 / NI66) has increased from a 2008/09 figure of 85.4% to a provisional outturn figure of 97.5% this year. This is above the target of 92%, above the statistical neighbour average of 92.4% and above the national average of 90.9%.
- Percentage of child protection cases which were reviewed within required timescales (No15 / NI67) has maintained top performance of 100% and is above the statistical neighbour average of 99.8% and the national average of 99.1%.

Please note that these figures are awaiting validation through the 903 and CIN census statutory returns.

Enjoying and Achieving

- Achievement of at least 78 points across the Early Years Foundation Stage with at least 6 in each of the scales in Personal Social and Emotional Development and Communication, Language and Literacy (No 19 / NI72). The outturn figure of 50.4% (relating to academic year 2008/09) is 3.8% above the target and above the statistical neighbour average of 49.9%. Although we remain slightly below the national average, the increase of 6.2% on the previous year is well above the national increase of 3.2%.
- Secondary school persistent absence rate (No 27 / NI 87). Although performance of 5.5% is still slightly worse than statistical neighbours (5.3%) and national (4.9%), the target of 6.5% has been exceeded and there has been a 1.7% improvement on 2008/09 outturn. Target exceeded in part due to collaborative work with schools. Schools are now taking a more pro active role in addressing PA. All PA students have an individual action plan. DCSF have requested that the LA review the target for 2011/12 in view of the progress made.

- Special Educational Needs – statements issued within 26 weeks (No 38 a & b / NI103 a & b) has maintained top performance (100%) in part a) excluding exceptions. This exceeds the target of 95% and is above the statistical neighbour average of 97.2% and the national average of 91%. Part b) including exceptions has also exceeded the target of 90% with an outturn figure of 97.4%. This shows an improvement on 2008/09 figure and is above the statistical neighbour average of 94.4% and the national average of 82%.

Making a Positive Contribution

- Rate of proven re-offending by young offenders (No 42 / NI19). The rate of re-offending (0.28) continues below that of the target (0.48), this is an improvement on the rate in 2008/09 of 0.69 and is better than the statistical neighbour average of 1.1 and the national average of 1.
- Coverage of Chlamydia in under 24 year olds (No 49 a / NI113 a) has an outturn figure of 25% which meets the target of 25% and shows improved performance from 2008/09 figure of 19.7%. This performance is better than the statistical neighbour average of 16.2%.

Achieving Economic Wellbeing

- Achievement of a Level 2 qualification by the age of 19 (No 52 / NI79) has met the target of 69% with performance of 70.9%. This is a positive direction of travel from the previous years outturn of 67.7%. Although this still remains below the statistical neighbour average of 72.1% and the national average of 75.9%, the increase of 3.2% is above the national increase of 2.3%.
- Care leavers in suitable accommodation (No 57 / NI147) has achieved a top performing 100% which is above the target of 95% and shows a improvement on last years outturn of 94.7%. This is above the statistical neighbour average of 89.3% and the national average of 89.6%.

Areas of Under-performance

Being Healthy

- Services for disabled children (No 5 / NI54). This is a new indicator and no target was set for the first parental satisfaction survey. The performance of 60% however, is 1.4% below the statistical neighbour average and 1% below the national average. Significant work has been undertaken through the Aiming High for Disabled Children programme to ensure that all parents who might be part of the survey have all the information they require in order to give an informed response.
- Prevalence of obesity among primary school age children in Year 6 (No 7a / NI56a). Although the performance of 19% has an upwards direction of travel from the 2008/09 figure of 22% the target of 18% has not been met and it is still below the national average of 18.3%.

Staying Safe

- Timeliness of placements of looked after children for adoption following an agency decision that the child should be placed for adoption (No 10 / NI61). This indicator has an unvalidated outturn figure of 72% which is below the target of 83%, has a downward direction of travel from last years outturn of 87.5%, below the statistical neighbour average of 77.8% and below the national average of 75.8%. A corporate performance clinic has been held on this indicator (see performance clinics section of this report).
- Percentage of initial assessments for children's social care carried out within 7 working days of referral (No 8 / NI59). This indicators performance of 74.6% is below the target of 80% and below 2008/09 performance of 77.8%. Performance is however, better than statistical neighbours (71.6%) and national (71.8%).

Please note that these figures are awaiting validation through the 903 and CIN census statutory returns.

Enjoying and Achieving

- Reduction in number of schools where fewer than 30% of pupils achieve 5 or more A*-C grades at GCSE or equivalent including GCSEs in English and Maths (No 23 / NI78) has an outturn performance of 2, this did not meet the target of 0, showed a downward direction of travel from 2008/09 performance of 1 and is worse than the statistical neighbour average of 1.3. Projections for 2010 suggest strongly that both schools will exceed 30% this summer and then remain above the floor target.
- Reduction of number of schools judged as requiring special measures and improvement in time taken to come out of the category (No 29a / NI89a). This indicator has historically been a major area of success with no schools being in Special Measures from December 2006 until this academic year. At the outturn period however, there were two schools in special measures and this is below the target of 0 and a downward direction of travel from 0 in 2008/09. It should be noted, however that this increase follows the introduction of the new Ofsted Framework in September 2009. Historically new Ofsted Frameworks produce increase in category schools nationally and that is likely to be replicated in Rotherham.
- Looked after children reaching level 4 in English at Key Stage 2 (No 34 / NI99) and Looked after children reaching level 4 in Maths at Key Stage 2 (No 35 / NI100). Both of these LAC attainment indicators are off target, with a downward direction of travel and are below statistical neighbour and national averages.

Making a Positive Contribution

- Young offenders' engagement in suitable education, training and employment (No 44 / NI45). This National Indicator performance of 71% does not meet the target of 75.6% and shows a downward direction of travel from 2008/09 performance of 72.6%. Performance is also worse than both the statistical neighbour average of 75.6% and the national average of 73.10%.

Achieving Economic Wellbeing

- Care leavers in employment, education or training (No 58 / NI148) is the only National Indicator within this theme not to meet the 2009/10 target with performance of 64% against the target of 65%. This indicator did, however show a positive direction of travel from a 2008/09 outturn figure of 55.3% and is also above the statistical neighbour and national averages of 58.2% and 63% respectively.
- 16 to 18 year olds who are not in education, training or employment (NEET) (No 56 / NI117) was the only indicator within this theme which showed a downward direction of travel. Performance has decreased to 7.9% from 6.9% in 2008/09. This indicator however, remains on target which was 8%.

Performance Clinics

At every quarter all indicators which are both 'off target' and have a 'downward Direction of Travel' are considered for clinics. Performance Management Officers review the data, comments and any discussions with PI managers to make informed recommendations. These are then approved or otherwise by CYPs Cabinet Member & Advisers. The Cabinet Member for Children and Young People's Services can also call clinics on particular issues of interest which are not monitored by National Indicators eg Foster Carers. Adhoc Performance Clinics, Turning the Curve workshops and additional internal challenge events have also been held on JLT request.

Previous Clinics

Below are summary details of recent performance clinic activity.

Topic: **Timeliness of placements of looked after children for adoption (No 10 / NI61).**
Clinic type: Corporate Improvement Board performance clinic

Main issues discussed

- Work of the new family finding social worker.
- Staffing issues and vacancy rates.
- Timeliness of court sessions.

Actions to be taken

- Report on the impact of the Family Finder who has been in post since November 2009. This post will increase finding of suitable families, matching children with families and placement stability
- Implement the LAC dedicated service in order to improve the focus on LAC
- Carry out analysis of current target and agree formula for re-setting and annual review. Targets to be stretching but within reasonable reach, bearing in mind benchmarking and changing influence from outside.

Topic: **Foster Carer Recruitment (not a National Indicator but identified through inspection improvement work)**

Clinic type: Elected member performance clinic

Main issues discussed

- Progress on the recruitment of foster carers.

- Work of the broader LAC strategy.
- Review LAC placements.
- Reducing LAC.
- Out of Authority placements.
- Pressures faced by change in laws for bedroom sharing.

Actions to be taken

- Overarching LAC strategy to be developed to encompass the issues discussed.
- Target of 30 new foster carers in 2010/2011.

Topic: Young people’s participation in positive activities. (NI110)

Clinic type: Rotherham Partnership ‘Turning the Curve’ workshop

Main issues discussed

- Engagement of schools.
- Working within the definition but also ensuring improvement for all young people not just those surveyed
- Incentives for participation

Actions to be taken

- Work has been undertaken to encourage schools and year 10 students to participate and understand the implications of completing the TELLUS survey.
- Promote value of Positive Activities on career targeting to year 10 pupils
- Improve awareness of activities across the Rotherham Partnership

▪ **Future Clinics**

Below are recommendations for future performance clinics.

No.	Ref.	Indicator	Rationale
16	NI 68	Percentage of referrals to children’s social care going on to initial assessment	Although significant targeted improvement work has been directed at these areas including a Corporate Improvement Board clinic in January, improvement has been minimal. These are key measures within the Notice to Improve and therefore it is recommended that a formal clinic be held to review progress and look at timeliness and quality of data for both measures.
8	NI 59	Percentage of initial assessments for children’s social care carried out within 7 working days of referral	
34,35 & 36	NI 99, NI 100, NI 101	LAC reaching L4 in English at KS2. LAC reaching L4 in Maths at KS2. LAC achieving 5 A*-C GCSEs (or equivalent) at KS4 (including English and Maths)	It is recognised that the LAC education cohort for these measures is small and can vary significantly year on year. Performance is below target and benchmarking groups. It is essential that we support looked after children to ensure their individual circumstances have as minimal impact on their education outcomes as possible to enable them to have good life choices.

▪ **Additional targeted improvement and challenge work**

In addition to the above, the improvement panel action plan covers a series targets around Staying Safe, Enjoying and Achieving and Leadership. Topics include;

- Staying Safe
- Enjoying and Achieving
- Leadership and Management
- Performance Management
- Recruitment and Retention of Social Care staff
- Finance
- ICT

Inspected and regulated services profile

Inspection outcomes against regulated services feature strongly in the CAA arrangements for CYPS and as such local monitoring arrangements are being strengthened to ensure we increase the percentage of providers which are judged “good or better”. Therefore this section of the report has been introduced to ensure Directors and Members are fully aware of progress against this standard and the impact on the CAA outcome for the service and council as a whole. The table below provides details of the outcomes of new inspections which took place between December 2009 and the end of quarter 4 (March 2009). It also provides a direction of travel against the Ofsted standard of “% providers good or better of all inspections” between the two periods in time.

	% good or better Dec 09	NEW INSPECTIONS BETWEEN JANUARY AND MARCH 2010					Grand total of all inspections	% good or better As at Mar 10	DOT
		Total	Outstanding	Good	Satisfactory	Inadequate			
Children’s homes	0%	2			2		6	0%	→
Secondary Schs	50%	1			1		15	50%	→
Primary Schs	65%	9	1	1	3	4	99	65%	↓
Childminders	51%	16	2	7	6	1	265	50%	↓
Childcare non domestic	56%	5			5		79	56%	↑
Special Schs	100%	1	1				6	100%	↑
PRU’s	20%	1			1		3	20%	→
Colleges	50%	0					3	50%	→
Maintained Nursery	95%	0					22	100%	↑
LA Fostering Agency	0%	0					1	0%	→
LA Adoption Agency	100%	0					1	100%	→
Private Fostering Arrangements	0%	0					1	0%	→
General FE and Tertiary Colleges	50%	0					1	50%	→